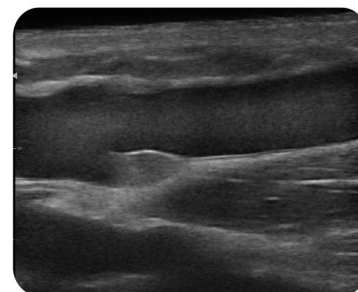
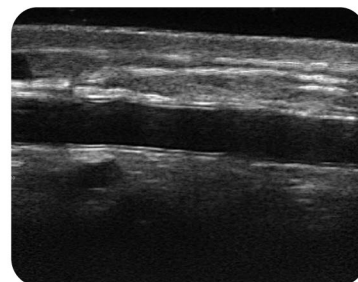


Wireless Probe Type Ultrasound Scanner

Welcome to inspect our probe with your phone/ipad



A new generation of magic medical devices

Specifications:

- Scan mode: Electronic Array Linear scanning
- Frequency: 15/20MHz
- Elements: 192 elements
- Channels: 64 channels
- Scanning Depth: 10/20/30/40mm, adjustable
- Field of view: 25
- Screen: iOS/Android/Windows screen
- Supporting system: iOS, Android, Windows
- Display mode: B, B/M, Color, PDI, PW
- Image Adjustment: gain, focus, reverse pulse harmonics, noise reduction
- Puncture Auxiliary Function: In-Plane puncture guide, Out-Plane puncture guide, automatic vascular measurement function

- Image gray scale: 256 level
- Noise reduction: 0-1-2-3-4
- Gain: 30db-105db
- Dynamic Range: 40/50/60/70/80/90/100/110
- Image/Video Storage: jpg, MP4, DICOM, store on mobile phones, Tablet PC
- Measure: distance, area, obstetrics and other
- Power: by built-in lithium battery, 2200mAh, wireless charging can extend the working time indefinitely
- Cineloop : manual and automatic, playback frames to be 100/200/500/1000
- WiFi Type : 802.11n/2.4G/5G dual-band 450Mbps
- Battery working time: 1.5 hours
- Size: 156mm×60mm×20mm
- Net Weight: 180 gram



viatom[®]
Innovation Beyond Limitation

SHENZHEN VIATOM TECHNOLOGY CO., LTD.
(LEPU MEDICAL AI DIVISION)

+86-755-8672 1161

marketing@viatomcare.com

www.viatomcare.com

2D, Building 1, Tingwei Industrial Park, Bao'an, Shenzhen, Guangdong 518100, P.R.China

650 W Duarte Road, Suite 309C Arcadia, CA 91007, USA