

**Alcohol Breath Tester**

# Operational Manual

**Model: TM-2000**



## **TABLE OF CONTENTS**

Introduction-----	
Correct Measurement-----	
Description of Parts-----	
Power Supply-----	
Operation-----	
Accessories-----	
Error and Troubles-----	
Important Notes-----	
Specifications-----	
Calibration and Record-----	
Precautions-----	
Distribution Contact -----	

## Introduction

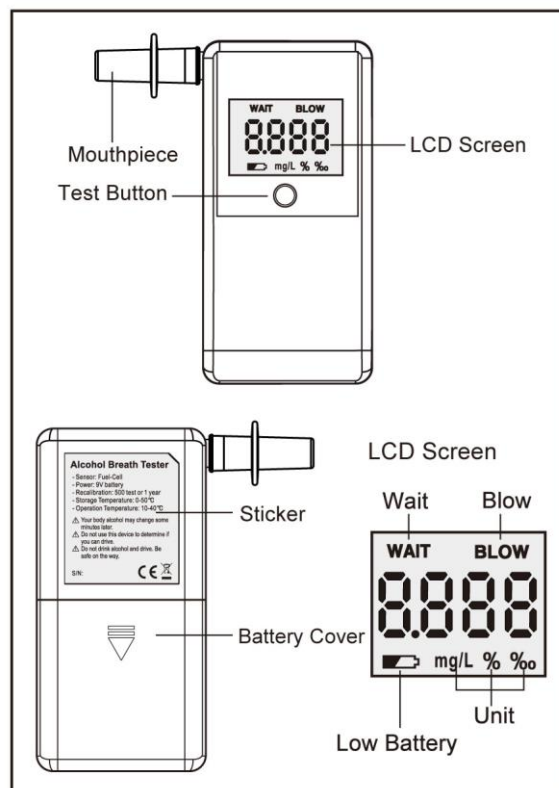
The device is intended to measure alcohol in the human breath. Measurements obtained by this device are used in the diagnosis of alcohol intoxication.

The accuracy of this device has been established at a Blood Alcohol Concentration of 0.00, 0.20, 0.50 and 0.80‰BAC.

## Preparation for Correct Measurement

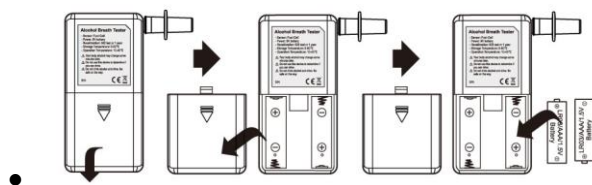
- Before testing, wait at least 15 minutes after your last drinking.
- Only use the device in a temperature 5°C ~ 45°C or 40°F ~ 114°F.


**Description of parts:** LCD screen, Mouthpiece, Test button, Rating label, Battery cover



## Power Supply

- Slide back the battery cover on the back of the device.
- Insert 2 piece AAA battery, making sure that the “+/-”symbols are correctly.

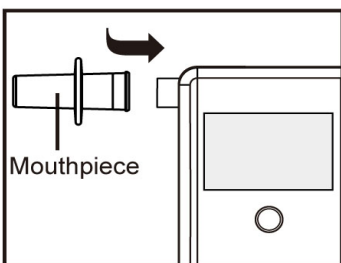


- If the power is too low, the unit may display a battery symbol “” and the device may not use correctly. You need to change a new battery.

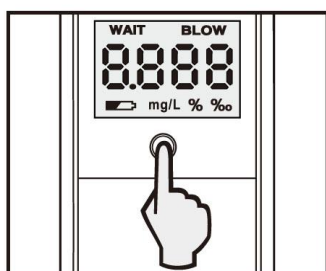
## Operation

### (Test mode)

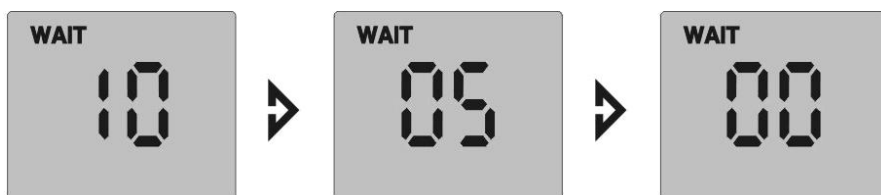
- Insert one of the mouthpieces into the ‘blow in’ hole.



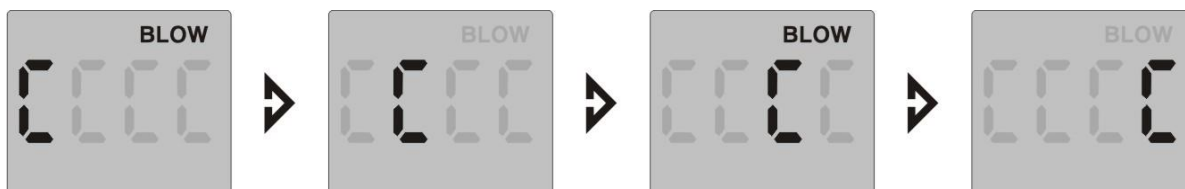
- Press and hold the TEST button until power on. Release it after power on.



- The WAIT displays on the screen and countdown 10, 9, and 8... to zero.

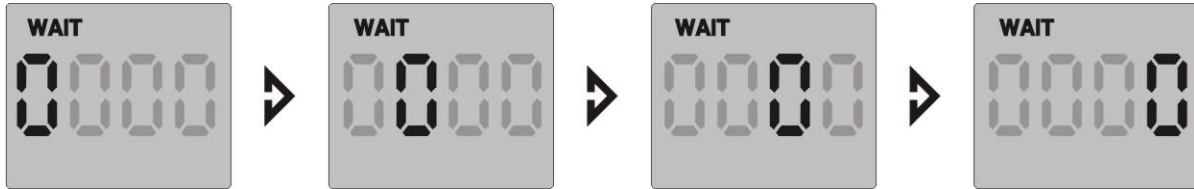


- The BLOW displays on the screen, and displays “C” with flashing. Take a deep breath, blowing steady into the mouthpiece until beeping stops (about 6 seconds).





- The device displays “WAIT” and flashing the “0” on the screen.



- Your test result will be displayed on the screen for 20 seconds.



- Your test result will be changed the color with beeping sound if above alarm limit.
- It will show error when incorrect blowing. Refer to the chapter of the “Errors and Troubles” in detail. The device will be turned off after indicated error.



### Accessories



- 5 Mouthpieces
- Manual
- Soft carry bag

### Important notes

- Before testing, wait at least 15 minutes after your last drinking.
- The blowing time must be enough until beeping stops.

- It may show ERR (error) if none, interrupt or shorter blowing.
- Recalibration interval suggest: 12 months or 500 tested times
- Never store the device in a corrosive gas room.
- Never store the device under sun exposure area.
- Avoid dropping or subjecting the device to a strong shock.

## Errors or Troubles

Error message or Troubles	Description	Remarks
No display	-Press and hold the TEST button until power on. -Check the battery and use alkaline battery only	
Auto Off	-Low battery -Over the period of test stage	
Err	-Blowing unsteady or interrupt -Blowing less than 6 seconds -Blowing flow too weak -No blow during BLOW mode.	
	-Low battery indication -Need to change new battery -Use alkaline battery only	
Alarm sound	-During the blowing mode -Error message indication -Above alcohol set point -Above tested times	
HI	-The blood alcohol content above the display range.	

## Specifications

- ♦ Electrochemical sensor (Fuel Cell Sensor)
- ♦ Blowing time about 6 seconds
- ♦ Blowing flow about 10L/min
- ♦ Blowing flow interrupt detection
- ♦ Test counter to display the operated number when power on
- ♦ 4 digits display with status and backlight
- ♦ Display range: 0.000-3.000‰
- ♦ Show “HI” if above the display range
- ♦ Accuracy: +/-0.05‰ at 0.50‰
- ♦ 5 replaceable mouthpieces
- ♦ Warm up time: 10 seconds
- ♦ Testing Time: 10 seconds
- ♦ Repeat test: less than 30 seconds.

- ♦ Audible sound and change LCD color if above alarm limit
- ♦ Power supply: 2 pcs AAA 1.5V alkaline battery
- ♦ Battery for standard testing is about 500 times
- ♦ Low battery indication and auto power off function
- ♦ Operation: 5°C ~ 45°C or 40°F ~ 114°F
- ♦ Store: 0°C ~ 50°C or 32°F~122°F
- ♦ Size: 105x55x23mm

## Calibration and Record

- You should have your alcohol tester calibrated every 12 months or 500 tested times. Failure to do so may cause your readings to be inaccurate.

Calibration Record			
Date First Used		Serial Number	
#	Calibration Date	Remarks	Recalibration by

## Precautions

- Your blood alcohol content (BAC) may change some minutes later.
- You should have your alcohol tester calibrated every 12 months or 800 tests. Failure to do so may cause your readings to be inaccurate.
- Do not use this device to determine if you can drive.
- You cannot use the test results of device in court of law.
- You cannot use the test result of device against police's unit.

## **Distribution / Importer**

Trendmedic GmbH & Co. KG  
Grube 21  
D-82377 Penzberg  
Germany  
Phone: +49 (0) 8856 9034177  
E-Mail: [info@trendmedic.de](mailto:info@trendmedic.de)  
Web: [www.trendmedic.com](http://www.trendmedic.com)  
WEEE-Reg-No.: DE 64485993

## **Producer/Manufacturer:**

SKYFINE INC. LIMITED  
15/F, Dundas Square, 43H Dundas Street, Mongkok, KLN, Hong Kong  
Tel: (86)769-83052666-22  
[www.skyfine.com](http://www.skyfine.com)

## **Notes on the Battery Ordinance**

Batteries and rechargeable batteries must not be disposed of in household waste. You are legally obliged to return used batteries and rechargeable batteries. You can either return the batteries to us after use or return them free of charge in the immediate vicinity (e.g. in shops or municipal collection points). Batteries and rechargeable batteries are marked with a crossed-out waste garbage can and the chemical symbol of the pollutant, namely "Cd" for cadmium, "Hg" for mercury and "Pb" for lead.

