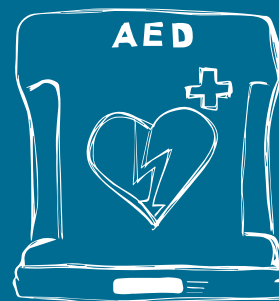


CORE PLUS



Specifications

Dimensions and weight

Dimensions: 430 x 504 x 214 mm

Weight: 4,25 kg

Materials used

Wall section: ABS

Base: ABS

Cover: PETG

PCB cover: PETG

Mounting bracket: Aluminium

Heater pack: Aluminium

Power supply/voltage limits

Power adapter: Meanwell GST120A24-P1M

Input: 100 - 240 V/AC, 50/60Hz

Output: 24 V - 5.0 A, 120 W MAX

Operating temperatures

The ARKY outdoor cabinet is designed for the protection and storage of an AED at ambient temperatures between -30°C and +50°C.

Heating/ventilation

The ARKY Core outdoor cabinet is equipped with two 24 V/45 W heating elements.

Heating: Switches **on** at <7°C

Switches **off** at >10°C.

Ventilation: Switches **on** at >40°C

Switches **off** at <35°C

Alarm

If the correct code is entered on the keypad (when the ARKY outdoor cabinet is powered by a suitable power supply), the cabinet will open and an acoustic alarm will sound. The alarm will switch off automatically after a few seconds.

IP degree of protection

The ARKY outdoor cabinet has IP55 degree of protection.